

AXIOM
ALLERGY VET

"For Allergy Testing In Cat, Dog & Horse"

Allergen Information

Moulds



Your Veterinary Surgeon will tick which allergens your animal has tested positive to.





Cladosporium



Cladosporium is a Genus of fungi including some of the most common indoor and outdoor moulds. It produces olive-green to brown or black colonies, and its dark-pigmented conidia are formed in simple or branching chains. *Cladosporium* spores are wind-dispersed and they are often extremely abundant in outdoor air. Indoors *Cladosporium* species may grow on surfaces when moisture is present. The airborne spores of *Cladosporium* species are significant allergens.



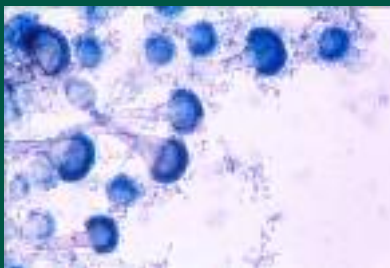
Penicillium



Penicillium (from Latin *penicillus*: paintbrush) is a Genus of *Ascomyceteous fungi*. The spores from *Penicillium* are also common allergens.



Aspergillus fumigatus



Aspergillus fumigatus is a fungus of the Genus *Aspergillus*, and is one of the most common *Aspergillus* species.

Colonies of the fungus produce thousands of minute grey-green conidia (2-3 μm) from conidiophores that readily become airborne. The airborne spores of *Aspergillus* species are significant allergens.



Alternaria



Alternaria is a Genus of *Ascomycete fungi*. *Alternaria* species are known as major plant pathogens. They are also common allergens, growing indoors

and causing hypersensitivity reactions.

Species of this fungal genus are often prolific producers of a variety of toxic compounds. The terms alternariosis and alternariatotoxicosis are used for disorders in humans and animals caused by a fungus in this genus.



Mucor



Mucor is a Genus of about 40 species of moulds commonly found in soil and on plant surfaces, as well as in rotten vegetable matter. Colonies of this fungal Genus are typically white to beige or grey and fast-growing. Colonies on culture medium may grow to several centimetres in height. Older colonies become grey to brown in colour due to the development of spores. *Mucor* sporangiophores can be simple or branched and form apical, globular sporangia that are supported and elevated by a column-shaped columella. Some *Mucor* species produce chlamydospores.

Candida



Candida, a yeast in the Genus *Penicillium*. It is related to Penicillin. The spores from *Candida* are also common allergens.

www.allergivet.co.uk

