

Microbiology Images



Worm
Nippostrongylus N. BRASILIENSIS (male) - in wild mouse



Bird louse

Axiom Veterinary Laboratories Ltd © June 2002



Cheyletiella

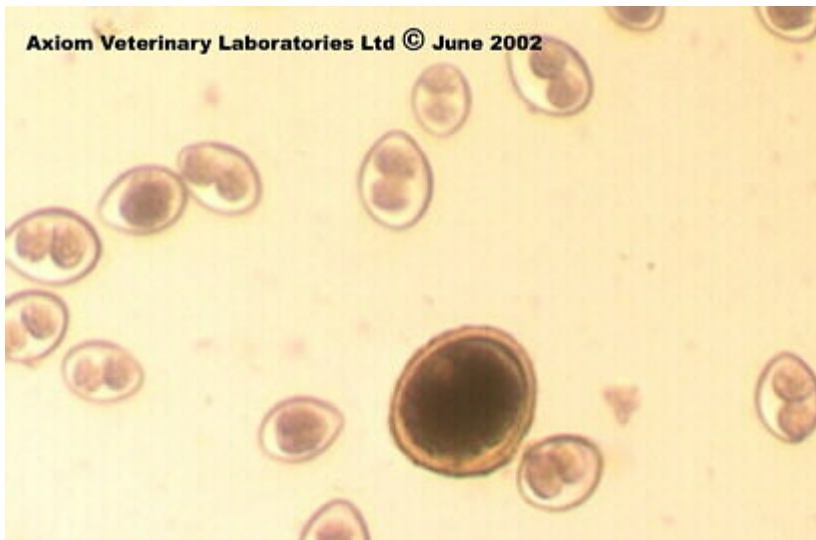
Axiom Veterinary Laboratories Ltd © May 2002



Eimeria



Sarcoptes



Toxocara canis and isospora

Axiom Veterinary Laboratories Ltd © June 2002



Strongyloides.sp

Axiom Veterinary Laboratories Ltd © June 2002



Demodex

Axiom Veterinary Laboratories Ltd © June 2002



Simonsiella.sp



Axiom Veterinary Laboratories Ltd © Aug 2003

Ixodes ricinus (mouth parts)



Axiom Veterinary Laboratories Ltd © Sep 2003

Poultry Louse
(*Cyclotogaster heterographus*)



Ixodes ricinus



Ghekkko mite

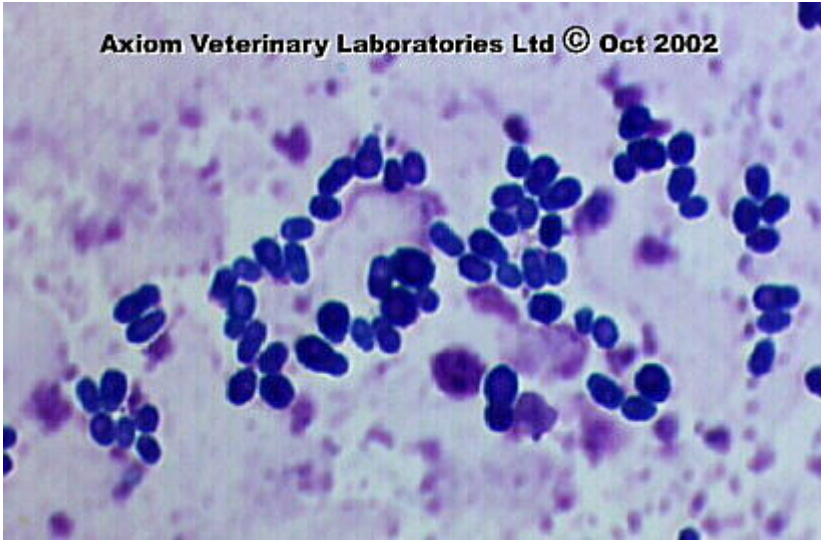


Triple phosphate crystals in feline urine
On cytology many triple phosphate crystals were detected.
Triple phosphate crystals may be present in normal dogs and cats,
but they can precipitate out and form calculi in alkaline urine.
Pyuria, haematuria and marked glucosuria are present.



Conidiophore and conidia in
Aspergillus fumigatus
- from fungal lesion in parrot's lung seen at PM.

Axiom Veterinary Laboratories Ltd © Oct 2002



Mycotic otitis