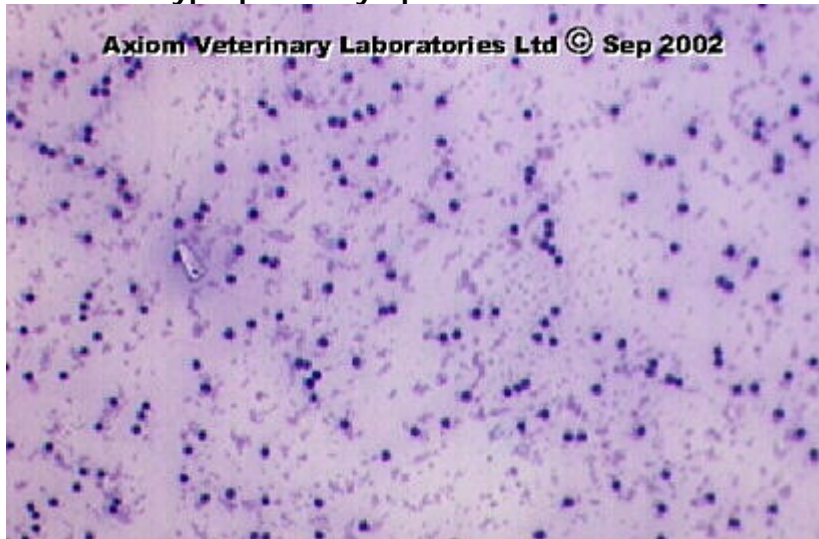
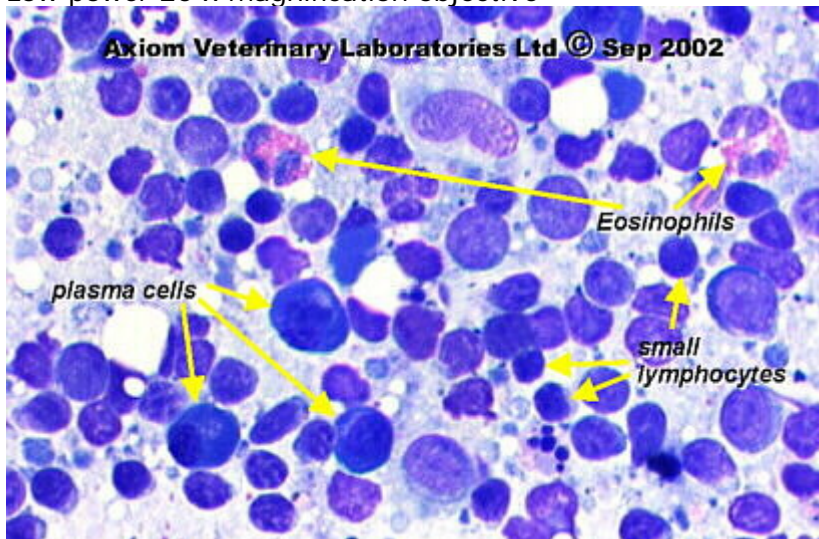


Cytology Images

Reactive/hyperplastic lymph nodes



Low power 20 x magnification objective



High power 50 x magnification objective

A 7 year old West Highland White bitch was presented with mild multicentric lymphadenopathy.

Haematology and biochemistry were unremarkable.

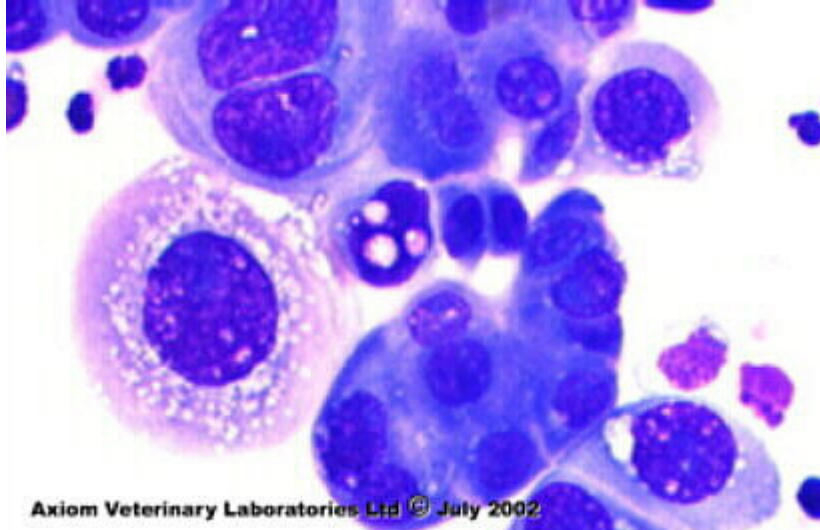
FNA of popliteal and prescapular lymphnodes were similar.

Elsewhere on the aspirates there were also a few melanophages.

Prostatic Wash Bilirubin



Cytological examination: This is a hypercellular aspirate.



The illustration shows numerous, irregularly arranged, cohesive clusters of epithelial cells. The cells within these clusters are showing a marked degree of anisocytosis and anisokaryosis, and considerable variation in nuclear:cytoplasmic ratio is evident.

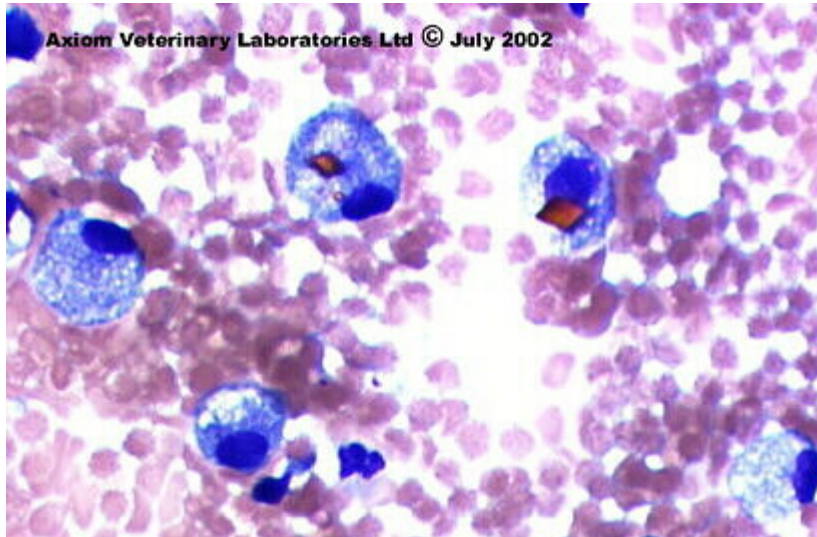
The cytoplasm appears vacuolated and there is evidence of multinucleation. Nuclear chromatin has a coarse stippled appearance and the nuclei contain one or more variably sized nucleoli. Some of these nucleoli are exceptionally large.

Many cells have a 'signet ring' appearance.

The cellular, nuclear and nucleolar features described above are typical of those associated with malignancy. A bronchogenic carcinoma is the prime differential here although metastatic neoplasia, for example from a mammary gland carcinoma, should also be considered.

Foamy macrophages

containing haematoidin crystals (submandibular sialocoele)



Osteomyelitis



Pleural effusion: mammary tumour metastasis

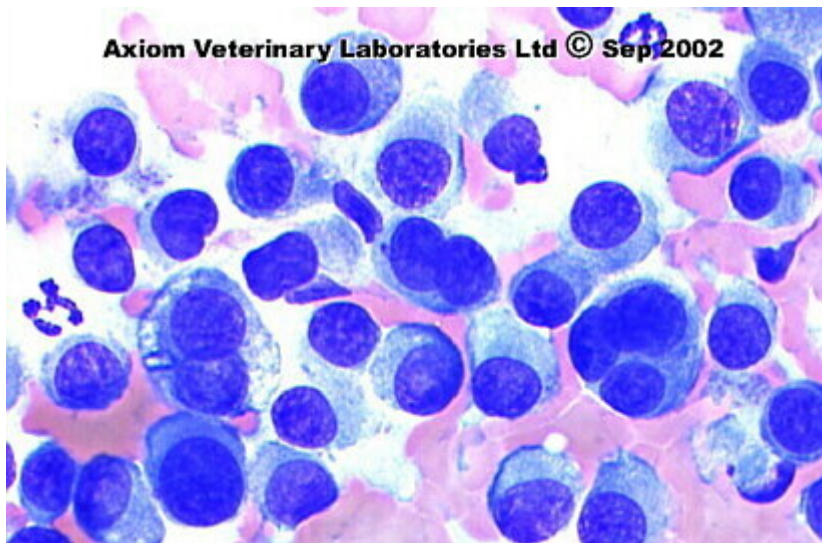


This bitch had an mammary gland carcinoma removed 8 months previously. Thoracic radiographs suggest the presence of pulmonary metastasis. The cells present in this effusion confirm metastatic spread has occurred.

Curshmanns spiral



Histiocytoma



This aspirate contains a population of round cells. Note that binucleated and multinucleated cells are present. Although some variation in cell size and nuclear: cytoplasmic ratio is evident this lesion is benign. Most histiocytomas regress spontaneously.